

# AMF

## SUPER JUNIOR TILT BOWL MIXER



- **The Super Junior Tilt Bowl Mixers are Suitable for Bread, Rolls, Pizza, Flour Tortillas, Donuts, and Yeast Raised Sweet Goods**
- **The Super Junior Tilt Bowl Mixers have the Strength and Reliability of our Industrial Line of Mixers, but at a Very Economical Price**

### FEATURES AND BENEFITS

- **The fabrication is in accordance with BISSC's quality and sanitation standards ANSI-Z50 requirements**
- **USDA accepted**
- **Stainless steel frame, bowl, and agitator**

## MECHANICAL FEATURES

- Solid stainless steel DE 90 bowl sheet, bowl ends and bowl cover
- Solid stainless steel triple roller bar agitator and agitator shaft
- Solid stainless steel mixer support frame and USDA mat finish
- Solid steel mixer legs
- Sanitary removable shaft seals
- Center lubrication block
- Side and rear bowl seals
- Pneumatic, 12" (305 mm) flour slide gate and vent with sock filter
- Two sanitary 1" (25 mm) diameter liquid inlets in bowl cover
- Single end Gates Poly Chain belt-drive system
- Parker hydraulic power bowl tilt, to 120 degrees forward
- Two speed, constant torque, 460V/3Ph/60Hz TEFC drive
- Vibration isolation pads

## ELECTRICAL FEATURES

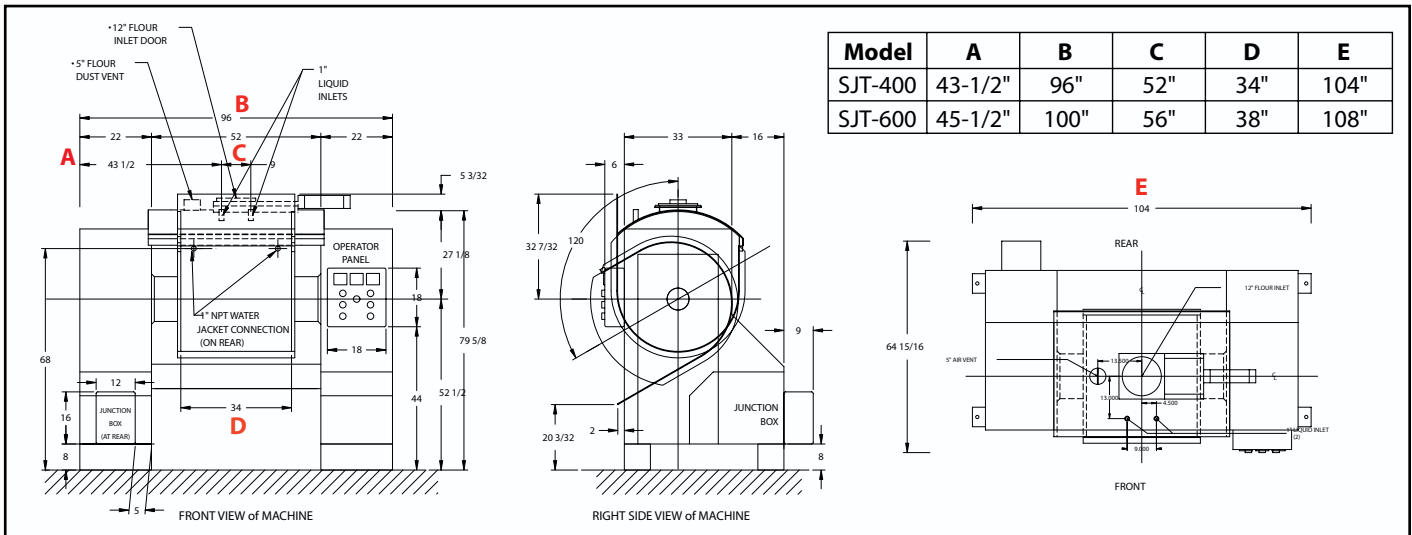
- Safety interlocked proximity switches on end doors
- Manual operator panel with two, LCD timers, up/down, jog, start/stop, E-stop, ampmeter and thermometer read-out
- Motor control system has a remote, NEMA 12 enclosure, fully magnetic starters and circuit breaker

## OPTIONS

- Manual trough hooks
- Bowl end cooling
- Canopy scraper
- 12" (305mm) O.D. butterfly valve in lieu of sliding flour gate
- Removable stainless mixer legs to raise bowl discharge height - per 3" (76 mm) increment
- Top-rear access hatch
- Extra liquid inlet
- Main drive motor upgrade
- Washdown duty main drive
- Remote pedestal operator controls
- NEMA 4X stainless remote, motor control cabinet
- Allen Bradley PanelView 600 with Micrologix PLC

## SPECIFICATIONS

Model	Rated Capacity @ 65% Absorption	Standard Main Drive	Approximate Shipping Weight
SJT-400	400 lb. (181 kg)	25 H.P.	8000 lb. (3629 kg)
SJT-600	600 lb. (272 kg)	30 H.P.	8800 lb. (3992 kg)



**Headquarters:**  
2115 W. Laburnum Ave.  
Richmond, Virginia 23227  
Tel: 1-800-225-3771  
or 1-804-355-7961  
Fax: 1-804-342-9724  
[sales@amfbakery.com](mailto:sales@amfbakery.com)

**Europe Office:**  
6 The Sidings  
Station Road, Guiseley  
Leeds LS20 8BX, England  
Tel: 44-1943-875703  
Fax: 44-1943-871806  
[sales-europe@amfbakery.com](mailto:sales-europe@amfbakery.com)

**Asia Office:**  
Room 15-2, A-Building  
Thunis Dev. Building  
No.11 Hui Xin East St.  
Chaoyang District  
Beijing, China 100029  
Tel: 86-10-64823613  
Fax: 86-10-64934259  
[sales-asia@amfbakery.com](mailto:sales-asia@amfbakery.com)

FOR MORE INFORMATION PLEASE CALL YOUR ACCOUNT MANAGER OR

**1-800-BAKERS-1**  
[www.amfbakery.com](http://www.amfbakery.com)